

Zoo Asson

12 RED PANDAS



WINTER		SUMMER	
11h30	15h20	11h30	16h20

13 SHORT-CLAWED OTTERS



WINTER		SUMMER	
11h40	15h30	11h40	16h30

21 KIMINACES



WINTER		SUMMER	
15h40		16h40	

18 MANED WOLVES



WINTER		SUMMER	
15h45		16h45	

20 HIPPOPOTAMUS

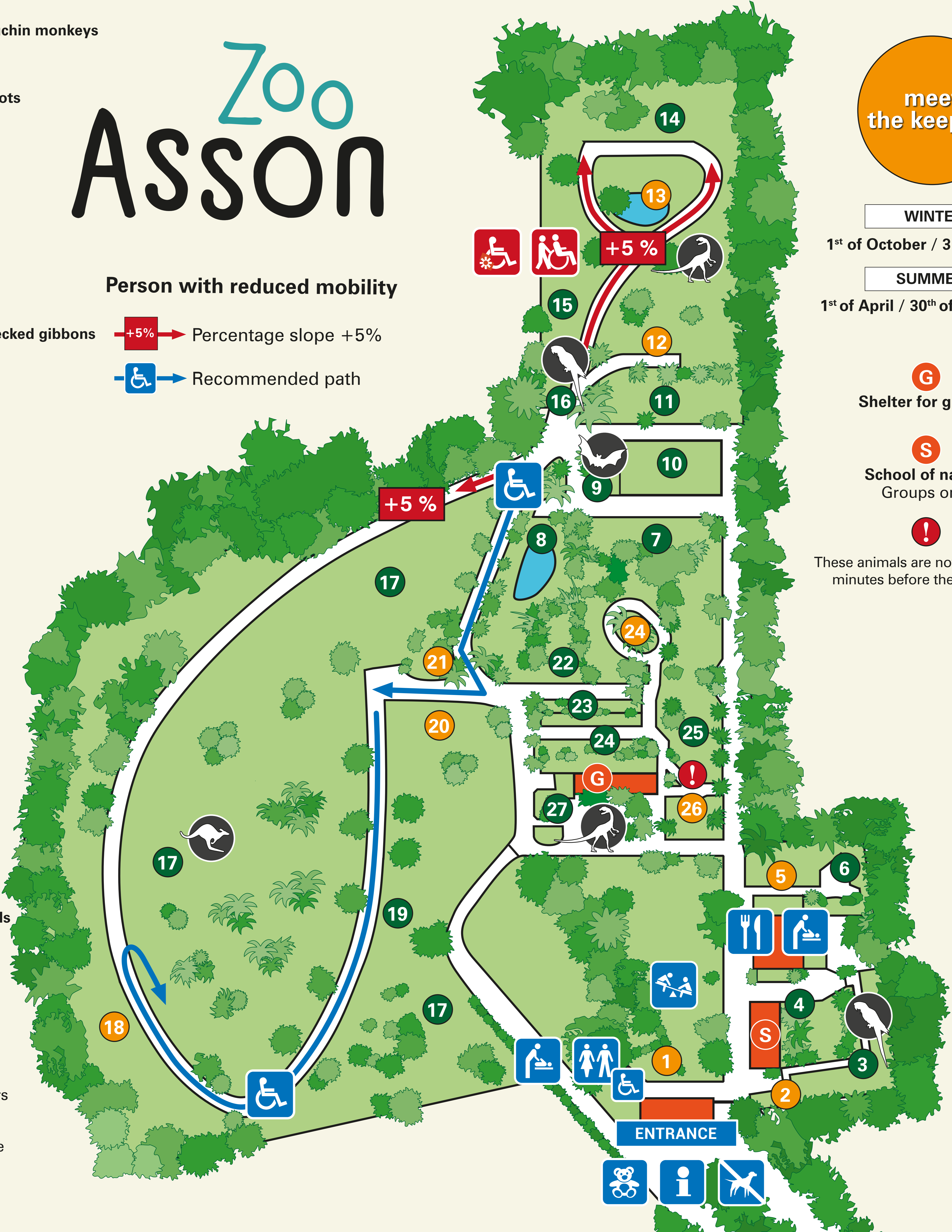
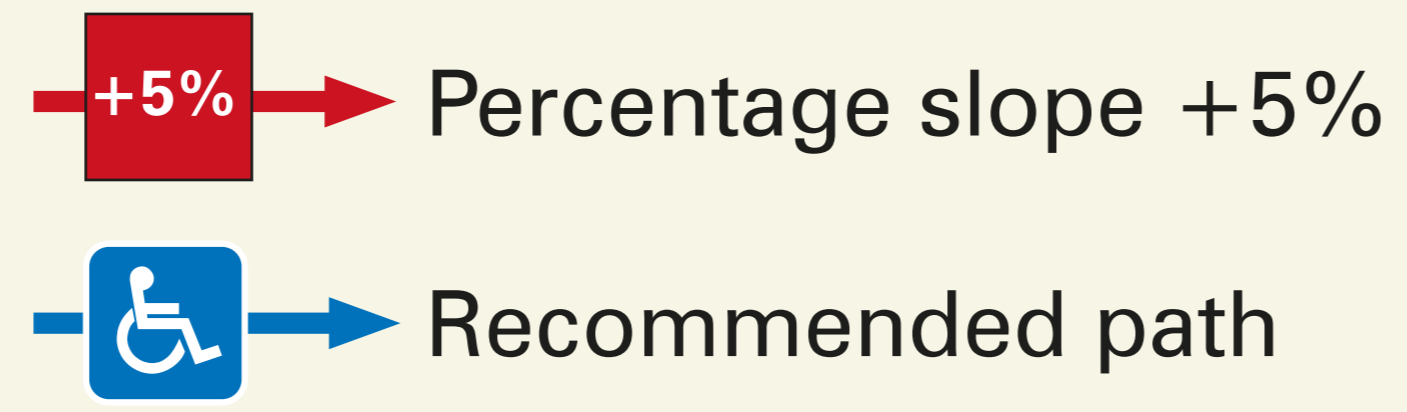


WINTER		SUMMER	
16h00		17h00	

- 1** White-throated capuchin monkeys
- 2** Sakis & tamarins
- 3** Tropical birds & parrots
- 4** The goat farm
- 5** Ocelotes
- 6** Parrots
- 7** Snow leopards
- 8** Rosy flamingos
- 9** Tropical greenhouse
- 10** Northern white-cheeked gibbons
- 11** Pileated gibbons
- 12** Red pandas
- 13** Short-clawed otters
- 14** White tiger
- 15** Sarus cranes
- 16** Aviary
- 17** Swamp wallabies
Red kangaroos
- 18** Maned wolves
- 19** Prairy dogs
- 20** Pygmy hippopotamus
- 21** Kiminaces
- 22** Congo duikers
- 23** Marmosets
- 24** Lemurs
- 25** Cape porcupines
Zebras
- 26** Serval cats
- 27** Lorikeets
Verreaux's eagle-owls

- WALK-THROUGH EXHIBITS**
- Exotic aviary
 - Dinosaurs
 - Nosy Bé
Free-roaming lemurs
 - Le Temple Perdu
Tropical greenhouse
 - Outback
Wild Australia

Person with reduced mobility



meet the keepers

WINTER

1st of October / 31st of March

SUMMER

1st of April / 30th of September

- G** Shelter for groups
- S** School of nature
Groups only

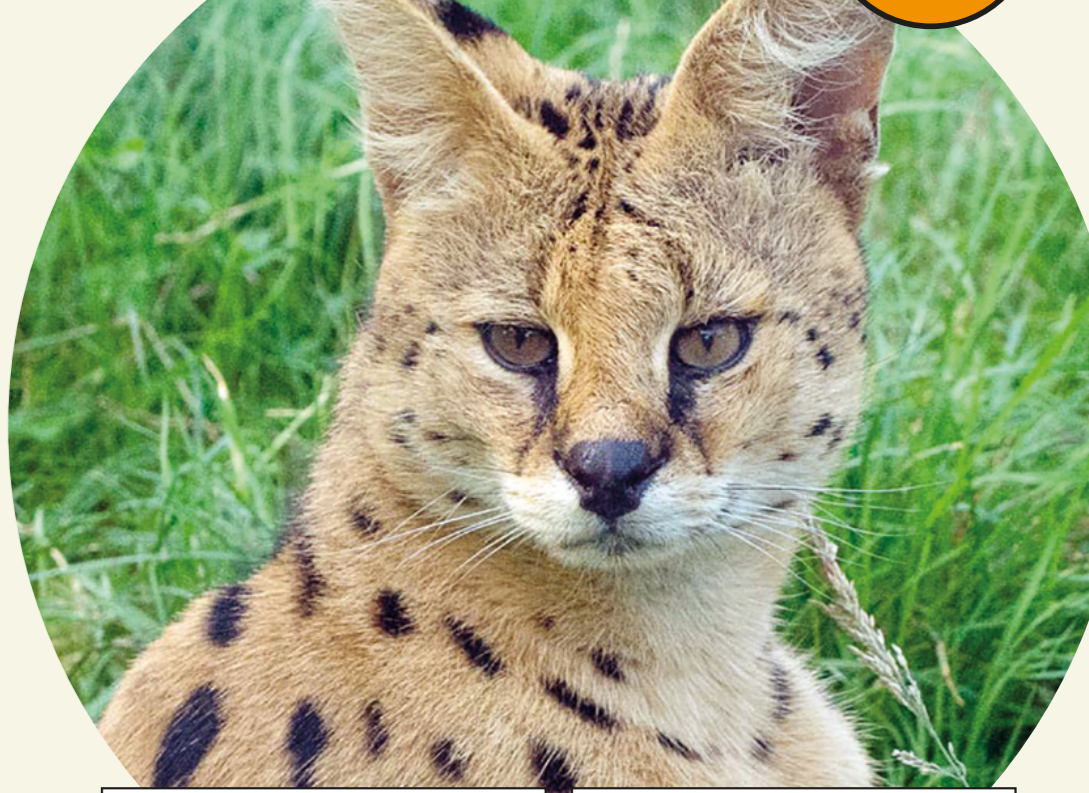
!
These animals are not on exhibit 20 minutes before the zoo closes

RING-TAILED LEMURS **24**



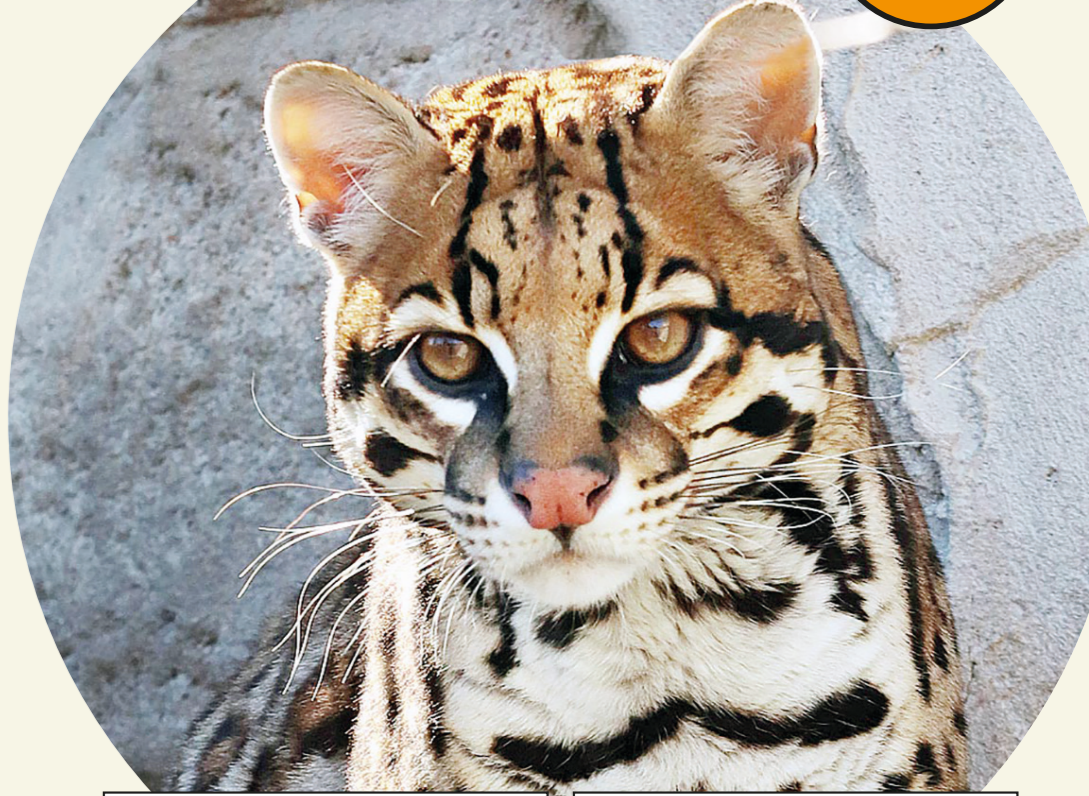
WINTER		SUMMER	
16h10		17h10	

SERVAL CATS **26**



WINTER		SUMMER	
16h30		17h30	

OCELOTES **5**



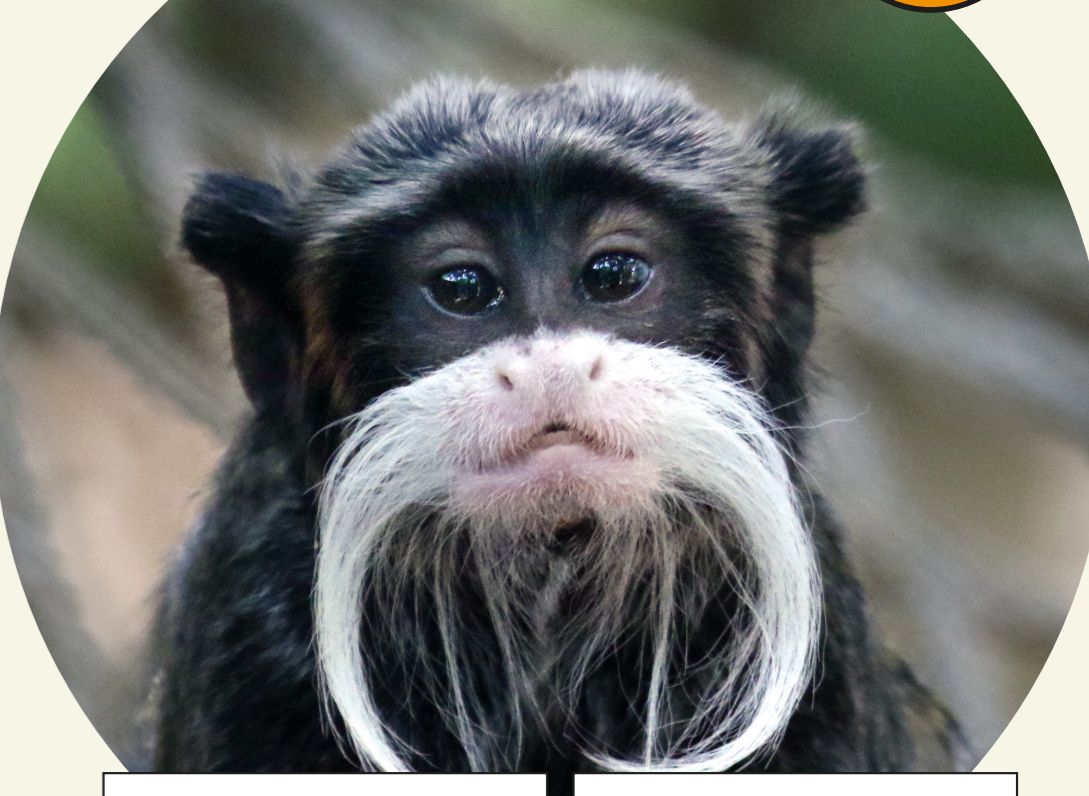
WINTER		SUMMER	
16h35		17h35	

CAPUCHIN MONKEYS **1**



WINTER		SUMMER	
16h50		17h50	

SAKIS / TAMARINS **2**



WINTER		SUMMER	
16h55		17h55	